

(A.K.A. ACME EAST AGR P.U.D.)

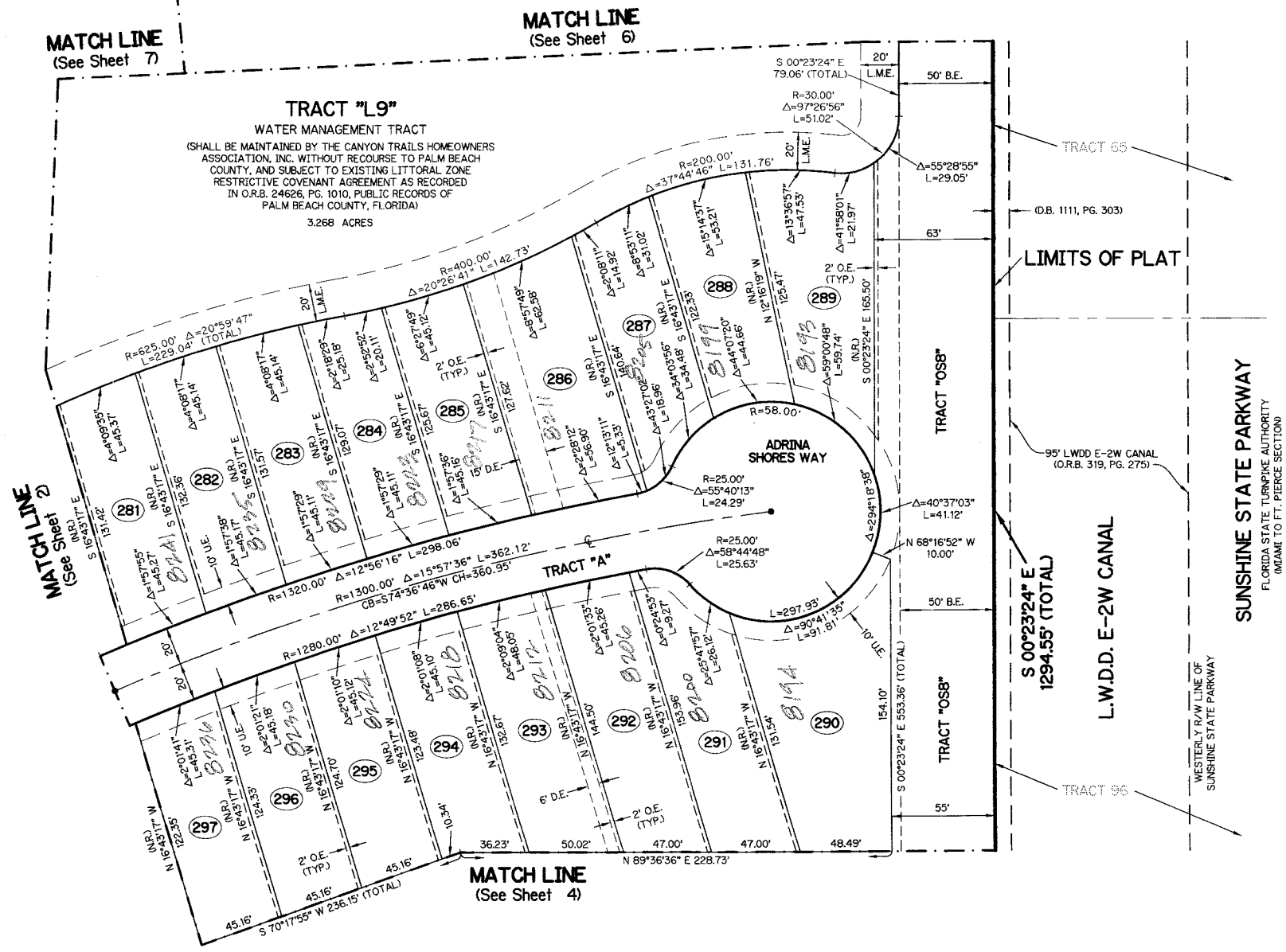
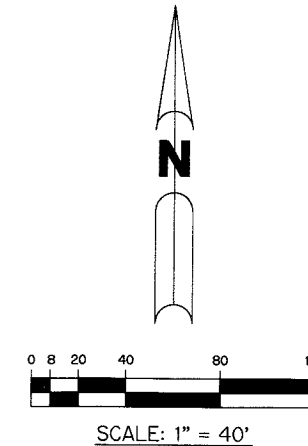
TRAILS AT CANYON - PLAT FOUR

BEING A REPLAT OF A PORTION OF TRACTS 66 THROUGH 68, 93 THROUGH 95, 99, 100 AND A PORTION OF A ROAD, DYKE AND DITCH RESERVATION, 30.00 FEET IN WIDTH, ALL LYING WITHIN BLOCK 54, PALM BEACH FARMS COMPANY PLAT NO. 3, ACCORDING TO THE PLAT THEREOF, AS RECORDED IN PLAT BOOK 2, PAGES 45 THROUGH 54, AND ALL OF TRACT "OS6" ACCORDING TO THE PLAT OF TRAILS AT CANYON - PLAT ONE, AS RECORDED IN PLAT BOOK 113, PAGE 107, ALL OF OF THE PUBLIC RECORDS, PALM BEACH COUNTY, FLORIDA, LYING IN SECTION 29, TOWNSHIP 45 SOUTH, RANGE 42 EAST

THIS INSTRUMENT PREPARED BY
PERRY C. WHITE, P.S.M. 4213, STATE OF FLORIDA
SAND & HILLS SURVEYING, INC.
8461 LAKE WORTH ROAD, SUITE 410
LAKE WORTH, FLORIDA 33467
LB-7741

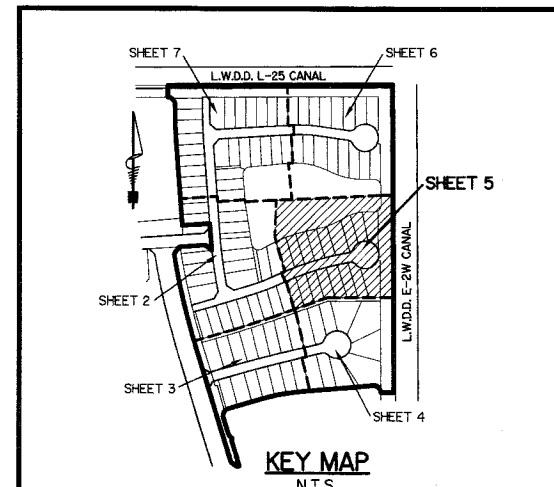
SHEET 5 OF 7 SEPTEMBER, 2011

5



- LEGEND:**
- - SET PERMANENT REFERENCE MONUMENT, L.B. #7741
 - - FOUND PERMANENT REFERENCE MONUMENT, L.B. #7741
 - - SET PERMANENT CONTROL POINT, L.B. #7741
 - - FOUND PERMANENT CONTROL POINT, L.B. #7741
 - △ - DELTA ANGLE
 - B.E. - BUFFER EASEMENT
 - CB - CHORD BEARING
 - CH - CHORD DISTANCE
 - C - CENTERLINE
 - D.B. - DEED BOOK
 - D.E. - DRAINAGE EASEMENT
 - F.P.L. - FLORIDA POWER & LIGHT
 - G.E. - GRADING EASEMENT
 - L - ARC LENGTH
 - L.A.E. - LIMITED ACCESS EASEMENT
 - L.M.A.E. - LAKE MAINTENANCE ACCESS EASEMENT
 - L.M.E. - LAKE MAINTENANCE EASEMENT
 - L.W.D.D. - LAKE WORTH DRAINAGE DISTRICT
 - N.R. - NOT RADIAL
 - N.T.S. - NOT TO SCALE
 - O.R.B. - OFFICIAL RECORD BOOK
 - O.E. - OVERHANG EASEMENT
 - P.B.C.U.E. - PALM BEACH COUNTY UTILITY EASEMENT
 - P.B. - PLAT BOOK
 - P.C.P. - PERMANENT CONTROL POINT
 - P.P. - PAGES
 - P.O.B. - POINT OF BEGINNING
 - P.O.C. - POINT OF COMMENCEMENT
 - P.S.M. - PROFESSIONAL SURVEYOR AND MAPPER
 - R - RADIUS
 - R/W - RIGHT-OF-WAY
 - R.D. & D. - ROAD, DYKE AND DITCH RESERVATION
 - S.T. - SURVEY TIE
 - U.E. - UTILITY EASEMENT
- N 100000.0000 - DENOTES STATE PLANE COORDINATES
E 100000.0000

NOTE:
COORDINATES SHOWN ON THE GEODETIC CONTROL MEET OR EXCEED THE LOCAL ACCURACY REQUIREMENTS OF A 2 CENTIMETER GEODETIC CONTROL SURVEY. COORDINATES SHOWN ARE GRID COORDINATES DATUM = NAD 83 (1990 ADJUSTMENT) AS READJUSTED BY PALM BEACH COUNTY IN 1998.
ZONE = FLORIDA EAST ZONE
LINEAR UNIT = U.S. SURVEY FEET
COORDINATE SYSTEM = 1983 STATE PLANE TRANSVERSE MERCATOR PROJECTION
ALL DISTANCES ARE GROUND
SCALE FACTOR = 1.0000227
PLAT BEARING = GRID BEARING



KEY MAP
N.T.S.